

INSTALLATION INSTRUCTIONS



FURNITURE

SAPPHIRE™ Mirror Cabinets



Single Door
Model



Double Door
Model

Contemporary design and quality construction, providing affordable storage for bathrooms of any size or style.

It's the details that Englefield cares about - from pioneering the latest technology, to innovative design.

BEFORE YOU BEGIN

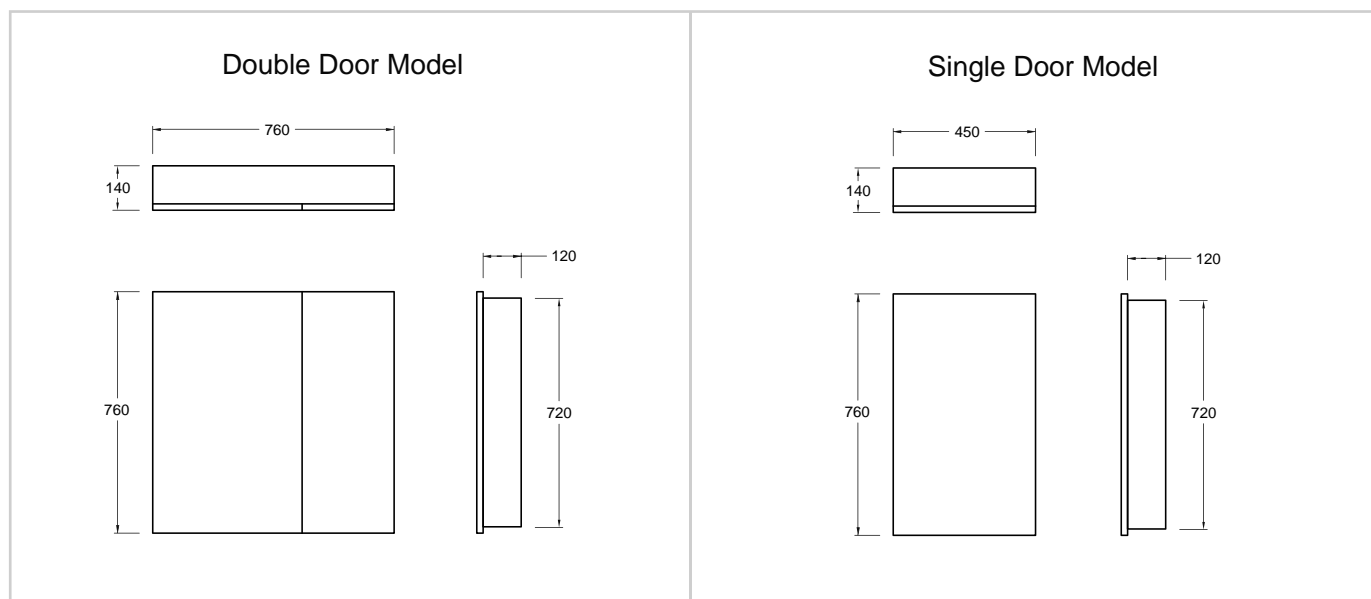
Please read these instructions carefully to familiarise yourself with the required tools, materials, and installation sequences. Follow the sections that pertain to your particular installation. This will help you avoid costly mistakes. In addition to proper installation, read all operating and safety instructions.

Prior to installation, inspect cabinet and top to ensure that no damage has occurred in transit. If damage has occurred, or a visible defect exists, do not proceed with installation, and advise your supplier immediately.

Instructions, drawings, and diagrams contained in this manual present information available at the time of printing. Although every attempt has been made to keep them up-to-date, Englefield reserves the right to implement product changes without further notice.

Please leave these instructions for the consumer. They contain important information.

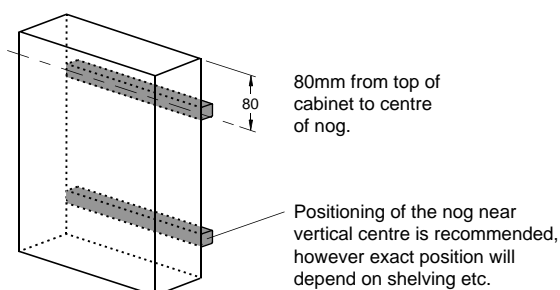
ROUGH-IN



CONSTRUCTION REQUIREMENTS

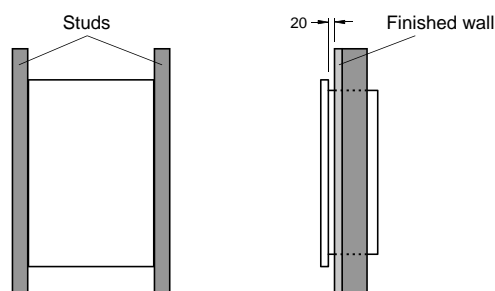
On-wall installation:

The cabinets must be fixed to two nogs in the wall. The nog size should be 50 x 75mm.



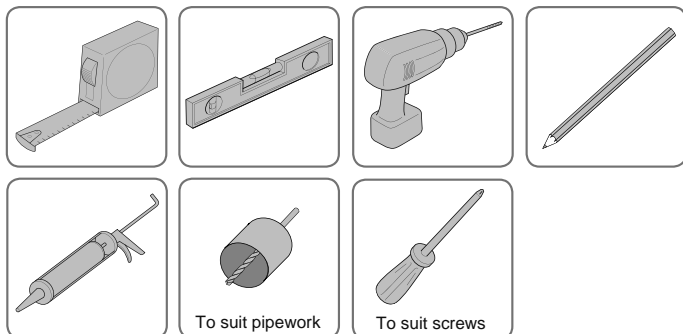
In-wall installation:

If inseting into the wall the cabinets must be fixed to studs and there must be at least a 20mm gap between the finished wall and the back of the door.

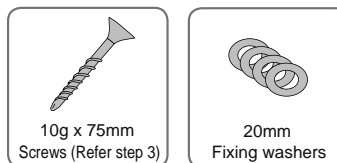


TOOLS AND MATERIALS REQUIRED - (Not Supplied)

TOOLS



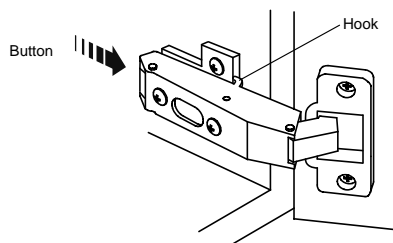
MATERIALS - Not supplied & must be purchased separately



INSTALLATION

1 Fixing the cabinet to the wall

- Choose the orientation of the cabinet. The cabinet can be rotated to be left handed or right handed.
- To make installation easier remove the cabinet door/s. To release hinges press the buttons at the rear of the hinges and unhook the hinge.



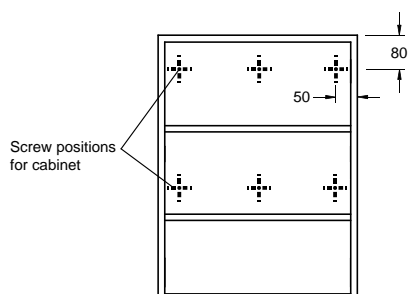
- Fix the cabinet in place using 6 screws (min 10g x 75mm) and 6 *washers (20mm) to fix the cabinet.

*Washers must be used to spread the load.

NOTE: Before fastening the cabinet make sure that it is level and square.

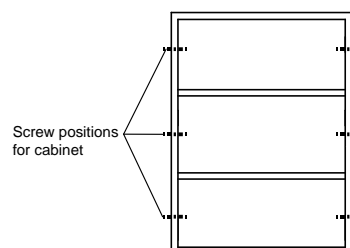
On-wall installation:

Screw through the back wall into the two nog/s.



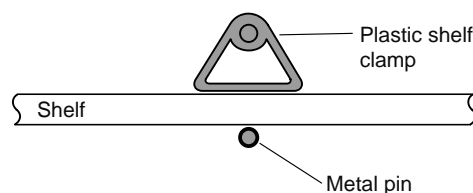
In-wall installation:

Screw through the sides into the studs.

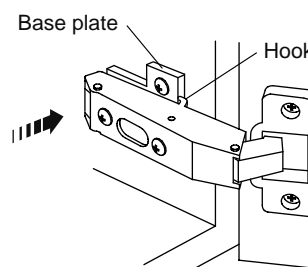


2 Installation finalisation

- Make sure the shelves are installed correctly for your selected cabinet orientation. The metal pin must be on the bottom of the shelves.



- Re-install the cabinet door/s. Hook the hinges onto the base plates and press down as shown.



INSTALLATION COMPLETE

CLEANING AND MAINTENANCE INSTRUCTIONS**Mirror:**

It is recommended that all moisture be removed with a soft cloth after each use.

To clean the mirror surface use a soft cloth with warm water and methylated spirits. Apply the cleaning solution to the cloth. Make sure all edges are thoroughly dry after cleaning. Cleaners should not be applied directly to the mirror surface as it could come into contact with the back of the mirror causing damage.

Do not use abrasive cleaners that could scratch the mirror. Acidic, alkali or extra strength ammonia cleaners should be avoided as these can damage the copper coating and destroy the mirror.

Cabinet:

The materials used in the mirror cabinet are water resistant only, not water proof. Care must be taken to clean up all water spillage onto the cabinet surfaces. To maintain the finish on your cabinet clean with mild soapy water and dry with a soft cloth.

CAUTION

Material used in cabinet is water resistant only, not waterproof.
Care must be taken to clean up all water spillage.

CONTACT AND WARRANTY INFORMATION**NEW ZEALAND**
KOHLER NZ LTD

Free Ph: 0800 100 382
Free Fax: 0800 664 488
www.Englefield.co.nz

AUSTRALIA
KOHLER CO.

Free Ph: 1 800 228 476
www.Englefield.com

For warranty information, please visit our website

